

ONE APPROACH TO ENSURING LONG-TERM ACCESS TO OCEAN RESEARCH DATA

Cyndy Chandler

Biological and Chemical Oceanography Data Management Office

Woods Hole Oceanographic Institution

Co-authors: Robert Groman, Molly Allison, Peter Wiebe, and David Glover

IMDIS 2013 Conference

Lucca, Italy September 2013



DATA TO ARCHIVE

Once upon a time ...

pumping systems



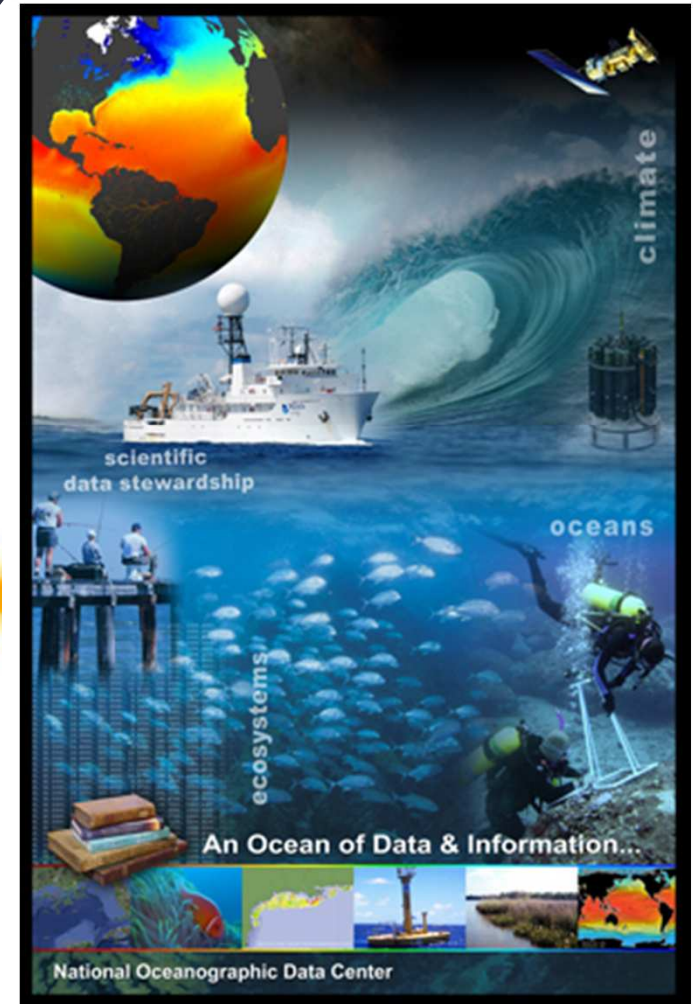
DATA TO DAC TO ARCHIVE



NATIONAL OCEANOGRAPHIC
DATA CENTER (**NODC**)
UNITED STATES DEPARTMENT OF COMMERCE



Sediment traps



U.S. NSF-FUNDED RESEARCH DATA



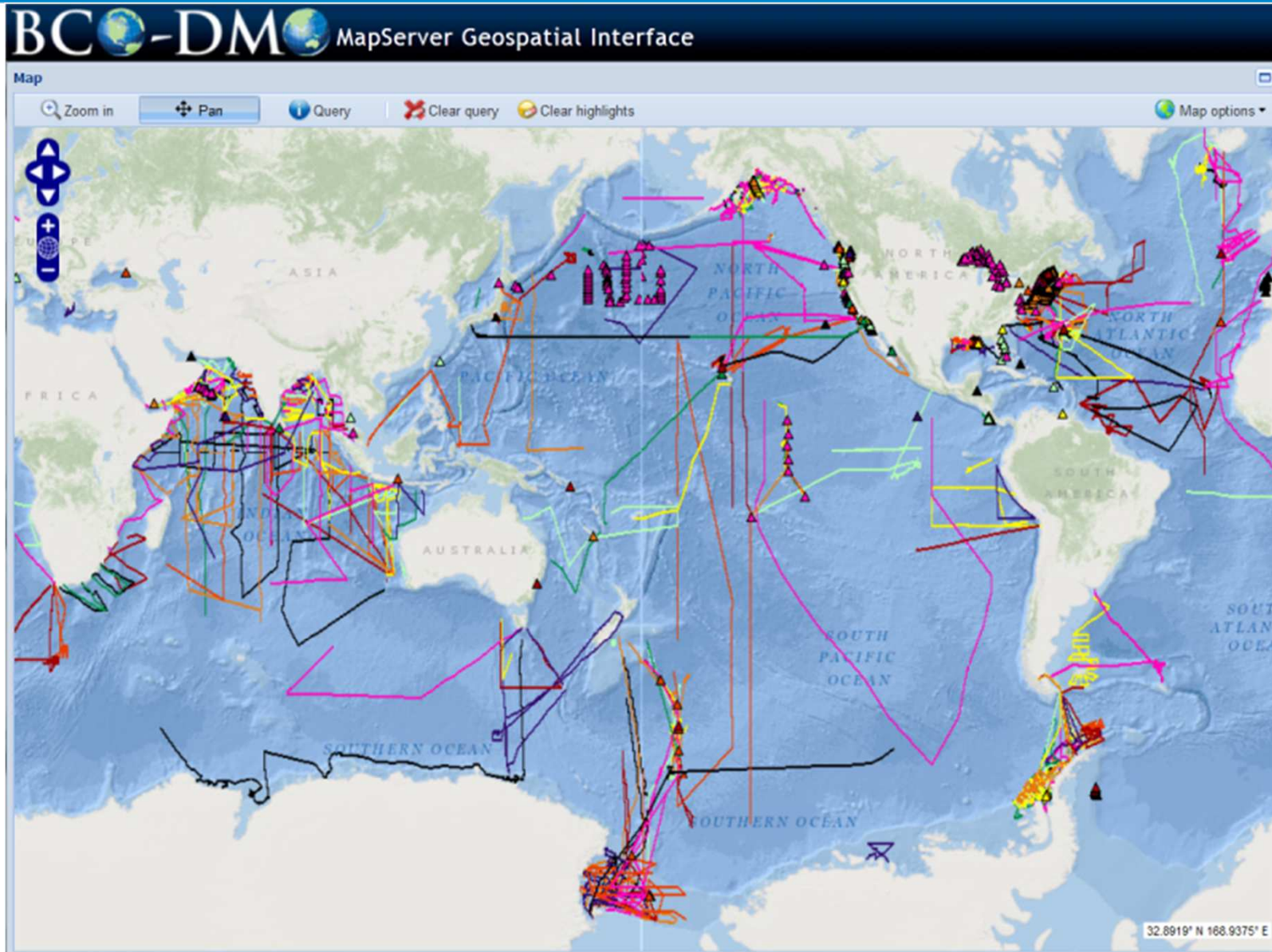
- funded by US NSF to provide data management support at no cost to researchers funded by the same program managers who fund BCO-DMO
- manage data from current projects, and legacy data from large coordinated research programs (e.g. US GLOBEC and US JGOFS)



bco-dmo.org

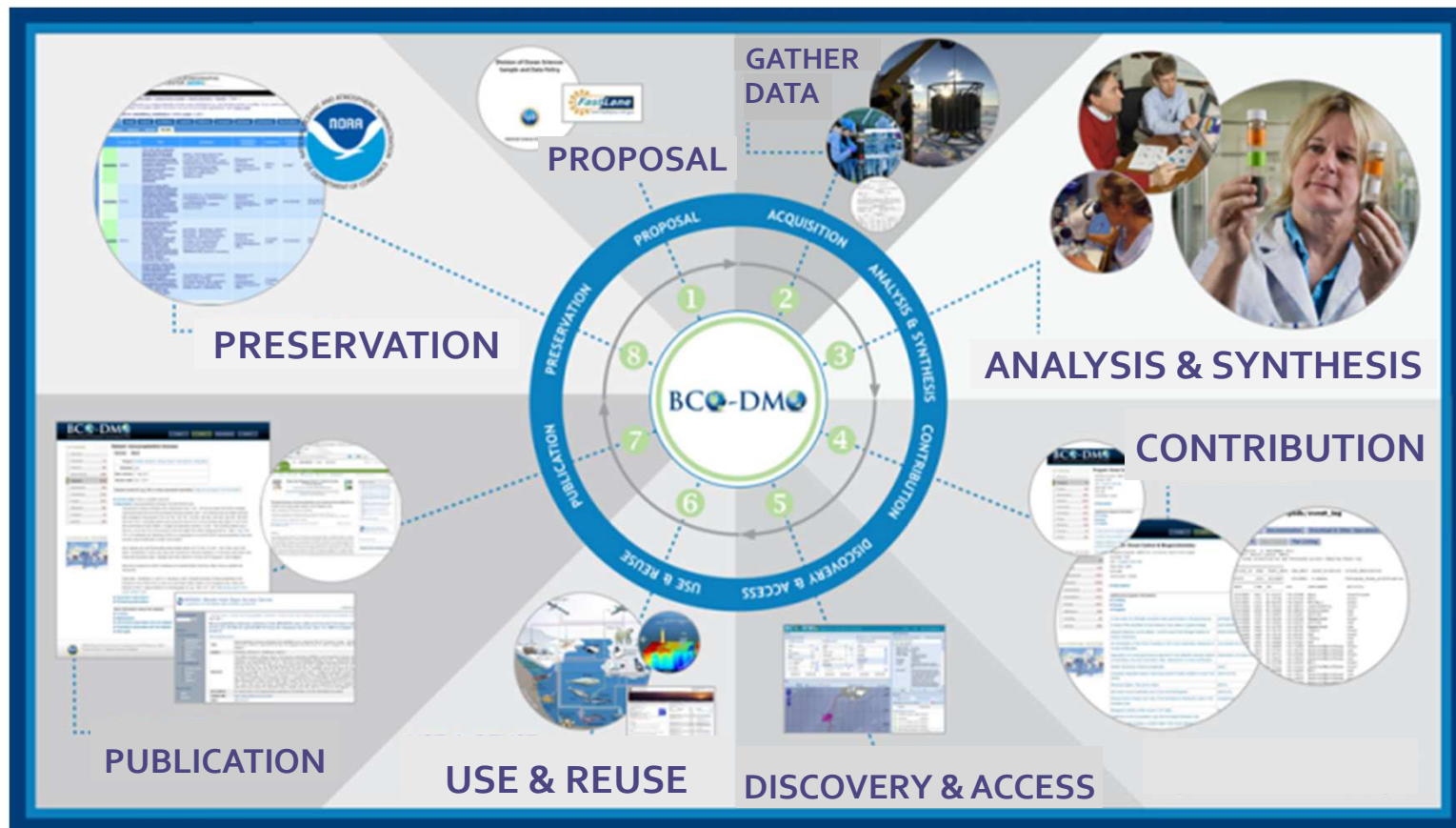


OPEN ACCESS RESEARCH DATA




DATA LIFE CYCLE

Good data management practices account for all aspects of the data cycle, featuring a stewardship philosophy in all phases from “proposal to preservation”.



PARTNERSHIPS

IODE
Associate
Data Unit (ADU)
iode.org



Join IODE as an “Associate Data Unit”
and be part of a Global Ocean Data
Network

Research Data
Alliance
rd-alliance.org

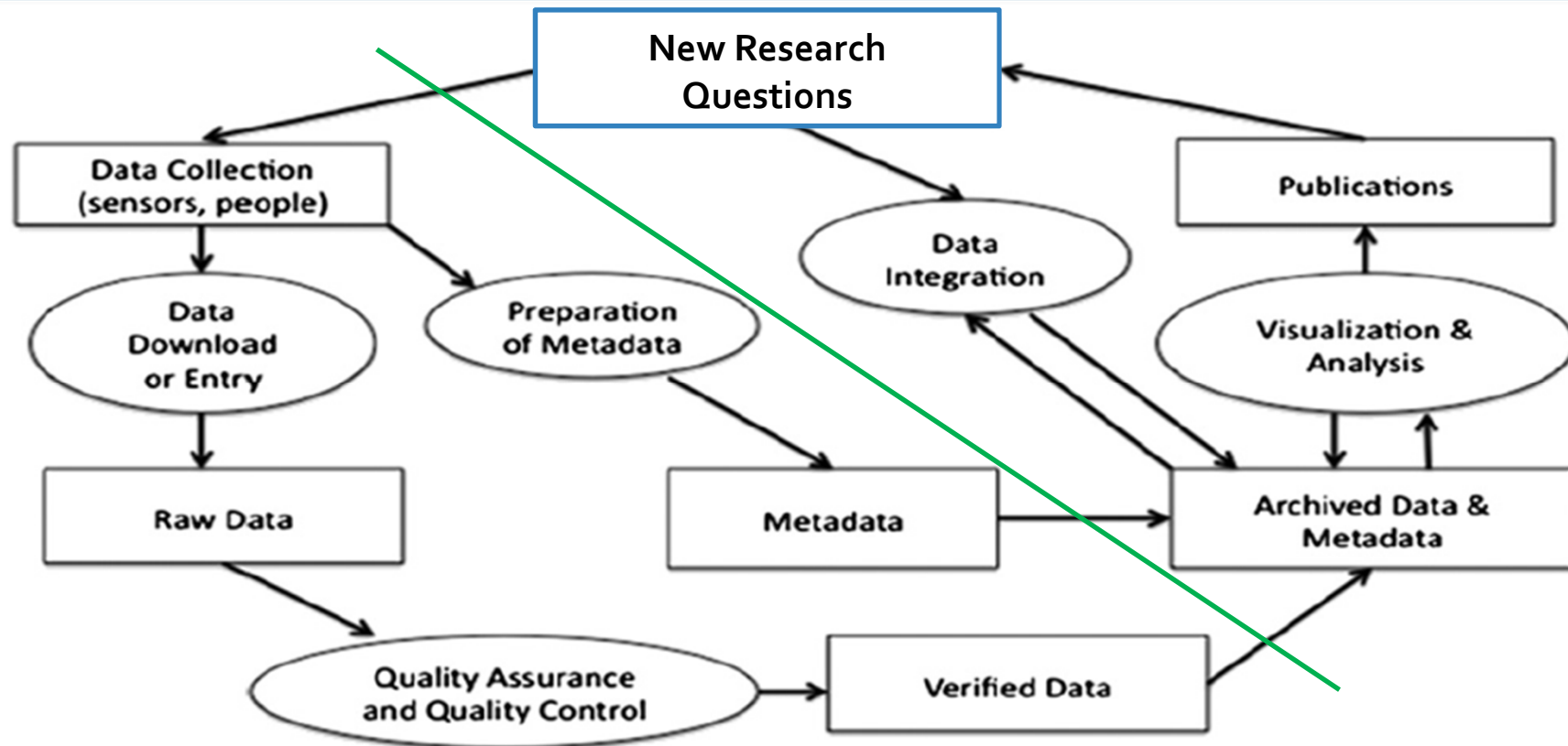


Research Data Sharing
without barriers

RDA ~ Marine Data Harmonization Interest Group

IMDIS bags included information for both opportunities.

THE RESEARCH DATA RE-CYCLE



For data that are properly curated, archived and preserved, a second 'life cycle' is possible, one that generates additional publications and new research questions.

William K. Michener et al. (2011) "Long term ecological research and information management", *Ecological Informatics*, Volume 6, Issue 1, 2011 pgs. 13 – 24, <http://dx.doi.org/10.1016/j.ecoinf.2010.11.005>

DATA DISCOVERY & ACCESS

Activities to promote data USE & REUSE:

- Use of standards (e.g. ISO, OGC)
- Controlled vocabulary terms
- Globally unique, persistent identifiers to unambiguously define a thing
- Agreeing on essential metadata (at least within a community-of-practice)



DISCOVERY
& ACCESS



DATA
USE & REUSE

Abstracts -- Posters: 37, 57, 138, 168, 170, 176

Talks: 32, 128, 139, 147, 171

THANK YOU

Comments . . . Questions?



Adam



Cyndy



Danie



Shannon



BCO-DMO people here this week

bco-dmo.org